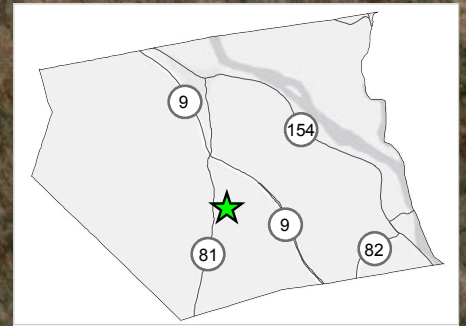
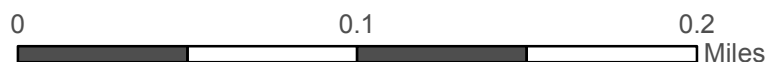
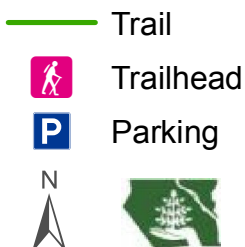
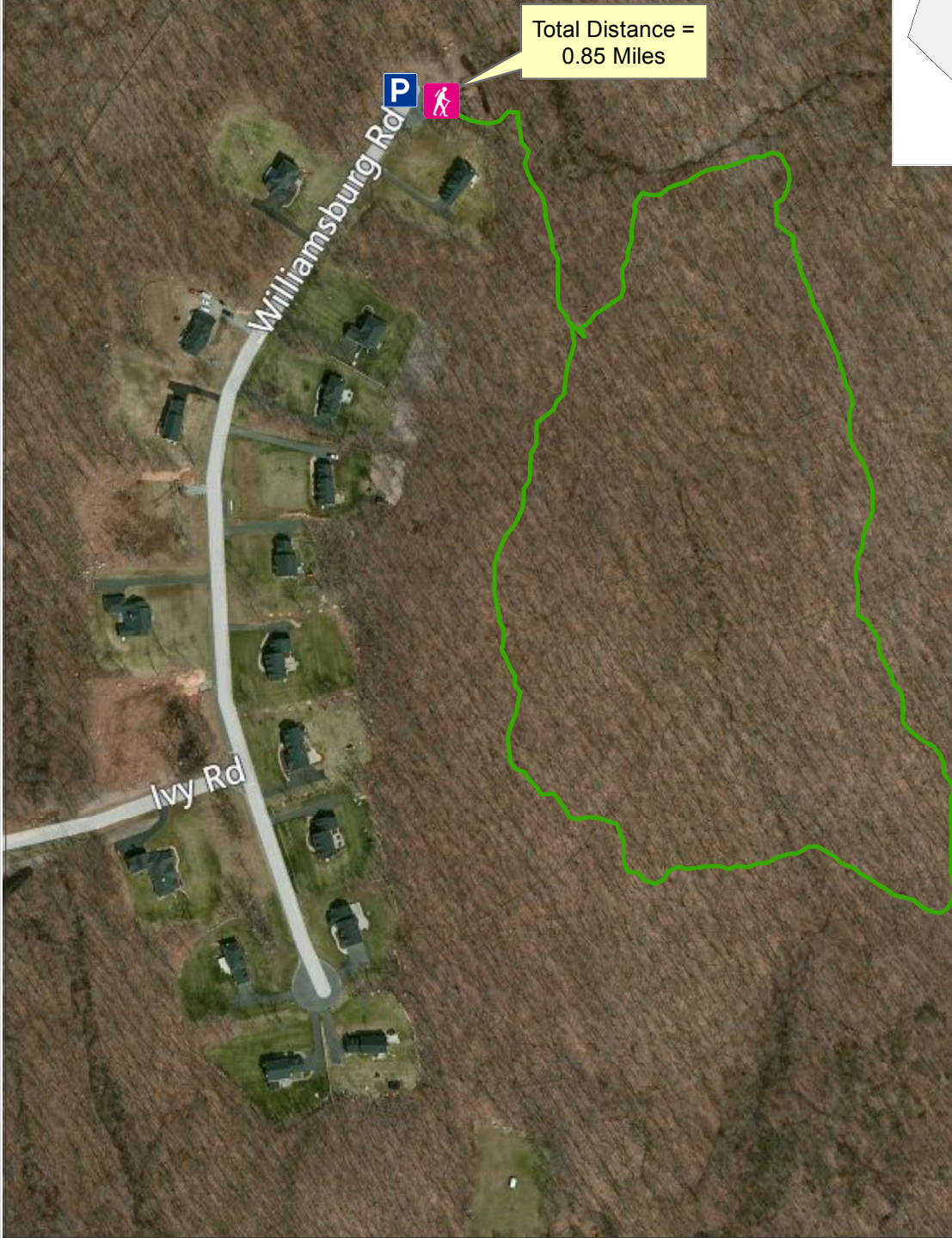


# Haddam Land Trust Washburn Preserve Trail

*Williamsburg Rd, Higganum*



Total Distance =  
0.85 Miles



Directions: From Higganum Center drive approximately 3.6 miles south on Killingworth Rd/CT-81 S. Turn left onto Ivy Rd then left onto Williamsburg Rd. Get driving directions [here](#). Trail data created by the Haddam Land Trust, Inc. through an ESRI GIS software grant. Please consult the Haddam Land Trust [trail use policy](#) prior to use. Dogs must be leashed. Please remain on trail.



Visit [HaddamTrails.org](http://HaddamTrails.org). Funding provided by the Higganum Vision Group through a grant from the Rockfall Foundation. Map created by UConn CLEAR, 2012.