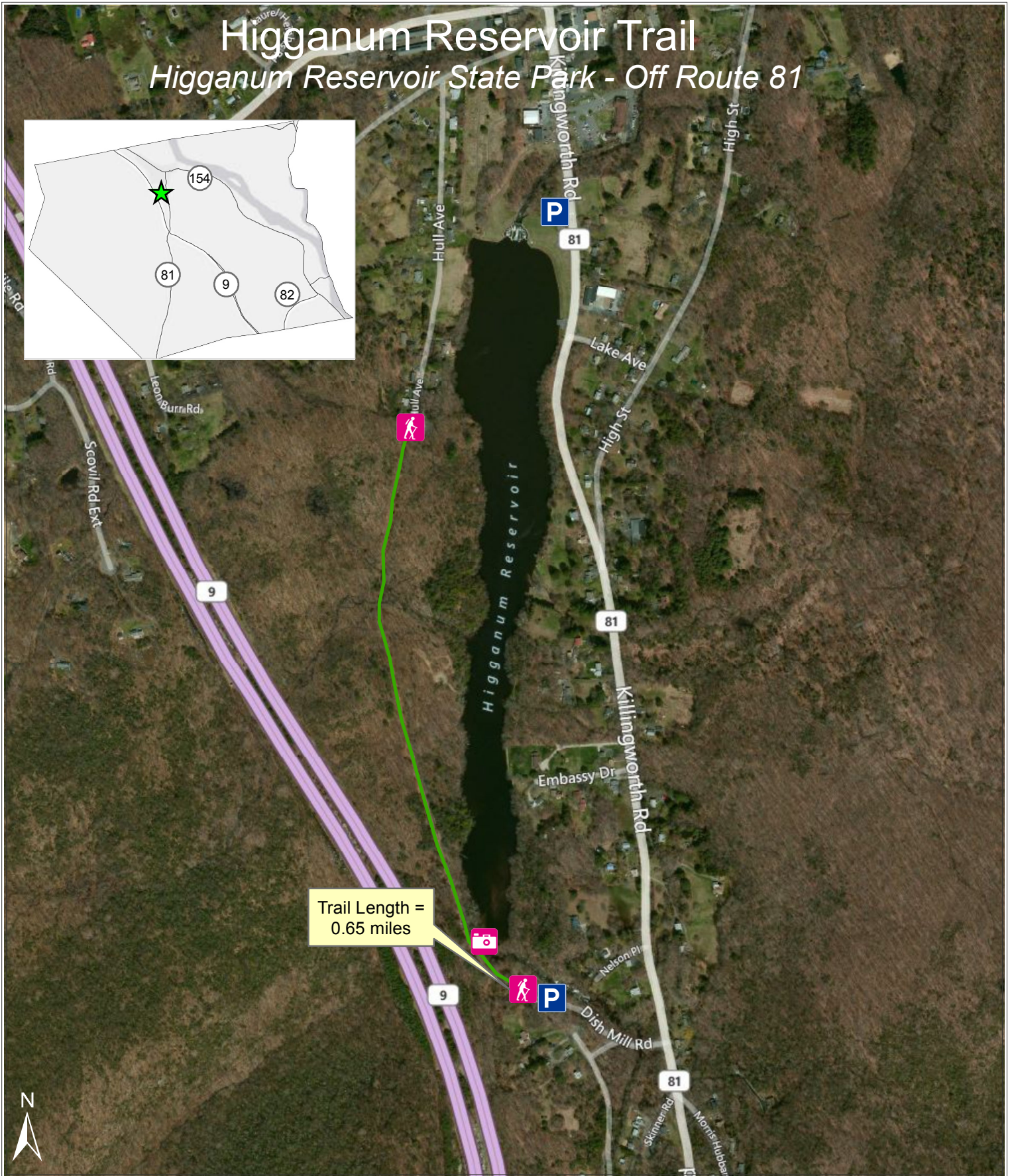
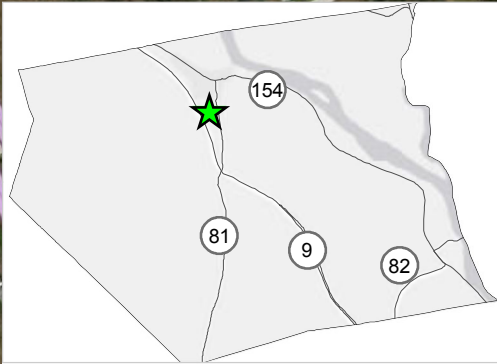


# Higganum Reservoir Trail

## Higganum Reservoir State Park - Off Route 81



Trailhead



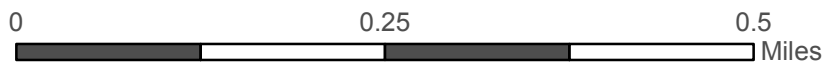
Waterfall



Parking



Trail



Directions: From the junction of Route 154 and Route 81, proceed south on Route 81 for 0.1 miles. Parking lot is on right at base of dam. Additional parking and trail access is located at the boat ramp at 155 Dish Mill Road off Route 81, 1 mile south. Get driving directions [here](#).

Visit the [CT DEEP website](#) for more information about the park.



Visit [HaddamTrails.org](http://HaddamTrails.org). Funding provided by the Higganum Vision Group through a grant from the Rockfall Foundation. Map created by UConn CLEAR, 2012.